

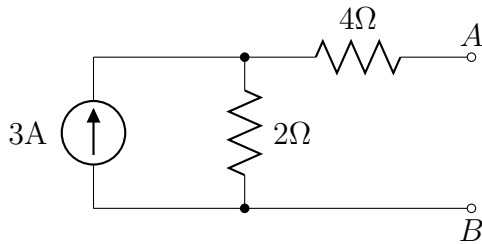
- Homework is due at the beginning of class
- Start early and get help if you need it
- Show all work neatly and clearly; redraw and/or rewrite problem if needed as work turned in should stand alone
- Identify your answers (with units) using a box or circle
- Staple multiple pages together

Find the Thevenin and Norton equivalent circuits (draw and label both) for everything connected between points A and B in the following circuits.

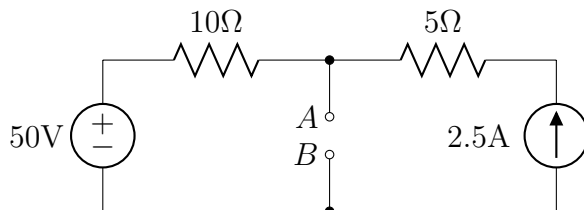
1. Figure 2.74a, page 79

2. Figure 2.74b, page 79

3.



4.



5. battery with a voltage measured to be 9.2V when nothing is connected to it, and 8.8V when a 100Ω resistor is placed across it